

ITEM # 1278

1278 HIGH-RISE HINGE

- Industry standard self-closing cam-rise hinge
- Heavy-duty face mount hinge
- High rising spiral cams. Total rise 7/8"
- Holds open dwell at 105°
- Through-pin flange design
- Raises door fast to create greater closing momentum, reduce closing drag, and reduce wear on sweeper gasket

SPECIFICATIONS

MATERIAL:
Steel strap, pivot pin, and fastener "C" ring with composite cam, follower, and top bearing

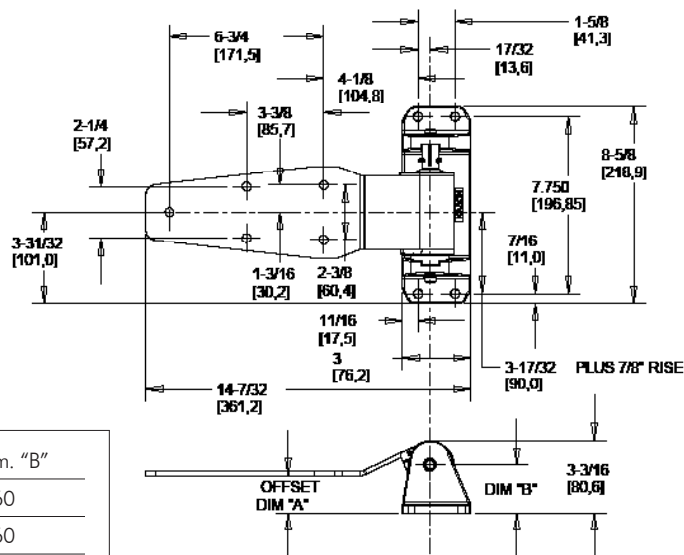
FINISH:
Kasonized (zinc-plated). Powder coat available

PACKAGING:
4 each

MOUNTING:
Drilled and countersunk to accommodate 3/8" fasteners

LOAD RATING:
See Hinge Selector Chart, Page B24, Group G

WEIGHT:
26 lb. (11.7kg)



Model No.	Item	Offset	Dim. "B"
11278000007	Hinge, Left Hand	1-1/8" (28.6 mm)	1.60
11278000008	Hinge, Right Hand	1-1/8" (28.6 mm)	1.60
11278000009	Hinge, Left Hand	1-1/4" (31.8 mm)	1.72
11278000010	Hinge, Right Hand	1-1/4" (31.8 mm)	1.72
11278000011	Hinge, Left Hand	1-3/8" (34.9 mm)	1.85
11278000012	Hinge, Right Hand	1-3/8" (34.9 mm)	1.85
11278000013	Hinge, Left Hand	1-1/2" (38.1 mm)	1.97
11278000014	Hinge, Right Hand	1-1/2" (38.1 mm)	1.97
11278000015	Hinge, Left Hand	1-5/8" (41.3 mm)	2.10
11278000016	Hinge, Right Hand	1-5/8" (41.3 mm)	2.10